

Fact Sheet

Experience the Magic

Located on a private 9-mile stretch of the Zambezi river, in 136 000 acres of pristine African wilderness, Matetsi Victoria Falls is an idyllic five-star retreat that provides the ideal base from which to visit the world's largest waterfall. A sense of freedom, space to breathe and a truly restorative experience are hallmarks of a stay at our family-owned property, which offers the ideal combination of safari, river, relaxation and the falls all-in-one. Guests, accompanied by experienced, conservation-minded guides, can explore the wildlife-rich area by foot, luxury safari vehicle or boat, taking in the sight of great herds of elephants and buffaloes, prides of lions and a range of other predators and plains game.

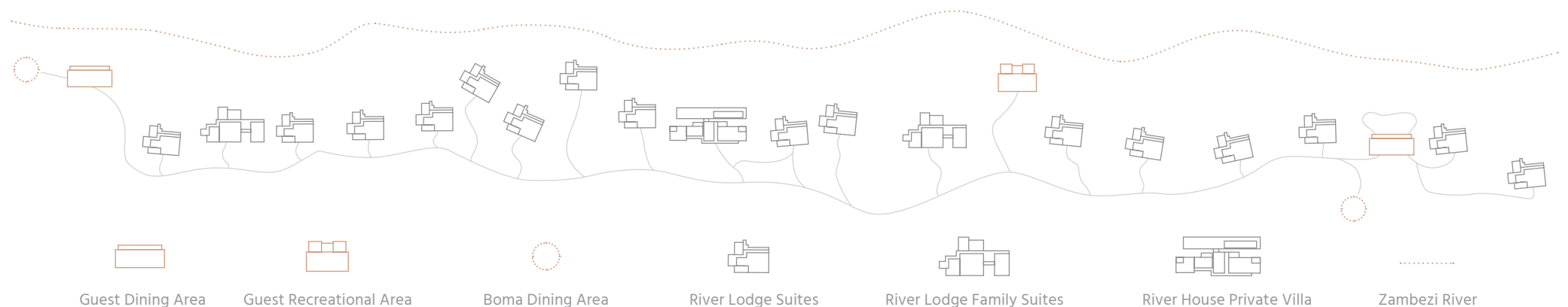
While the superb location, beautifully designed lodge and understated luxury are generally the initial drawcards, it's the feel of Matetsi, its indelible magic, that our guests love most. Our extraordinary team, including talented chefs, butlers and guides, truly elevate the experience here.

What makes Matetsi Magic?

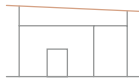
- 9 miles (15 km) of private Zambezi River frontage
- 136 000 acres (55 000 hectares) of private wildlife concession - home to four of the Big Five
- Easy access to Victoria Falls
- Private airstrip and helipad on property
- Exclusive land-based safaris such as game drives (including night drives), walking safaris and birdwatching
- Variety of water-based activities such as canoeing, fishing and boat excursions (including sunrise and sunset cruises)
- Passionate safari guides, assisted by sharp-eyed trackers
- Superb local hospitality with personal butler service
- Excellent showcase of the cultural heritage of Zimbabwe
- Safari boutique, fitness centre, massage sala, wine cellar, lap pool and a library
- World-class and varied dining experiences

Lodge Layout

Positions are approximate and indicative



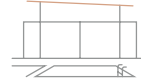
Amenities



1-bedroom
suites



2-bedroom
family suites



4-bedroom
private villa



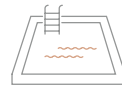
Indoor and outdoor
dining spaces



Boma (BBQ) dining area
for traditional meals



Air-conditioned
suites



Private plunge pools
throughout



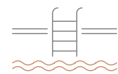
Fitness studio



Massage sala



Al fresco
lounge areas



20m lap pool
overlooking the river



Safari
boutique



Luxury safari
vehicles



Library and
boardroom



Private wine
cellar



Complimentary
laundry service



Complimentary in-room
and lodge WiFi



iPads for
guests use



In-room Bluetooth
speakers

Getting here

Matetsi Victoria Falls can be accessed via road transfers from Victoria Falls (Zimbabwe), Livingstone Airport (Zambia) or Kasane (Botswana).

Victoria Falls International Airport | 60 km / 1 hour

Livingstone International Airport | 61 km + border crossing / 1.5 hours

Kasane International Airport | 45 km + border crossing / 1.5 hours

Helicopter transfers are available from Victoria Falls Airport to our helipad, and private flights can be arranged to land on our airstrip.

Health & Well-being

The health and well-being of our guests and our team are our top priorities at Matetsi Victoria Falls. We follow strict health and safety protocols, to learn more visit:

We have also put in place flexible booking terms so that our guests can book and travel with confidence. Furthermore, our private helipad and airstrip as well as exclusive-use options allow for ultimate privacy when visiting our beautiful corner of the world.

For more information, contact us:

Matetsi Victoria Falls

+263 8677 004 779 | info@matetsivictoriafalls.com | www.matetsivictoriafalls.com

Reservations

+27 11 397 1142 | reservations@matetsivictoriafalls.com